

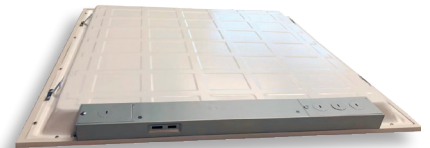
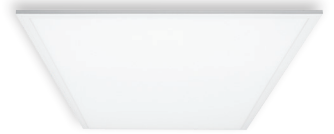
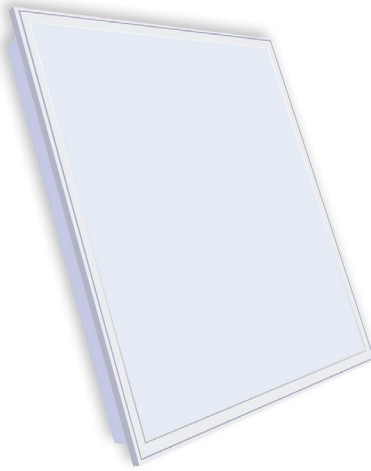


INTRODUCING

ADJUSTABLE PANEL LIGHT

Best-seller lighting offering adjustable brightness and power

*The Light Master Slim LED Panel Light adopts qualified super bright LED as light source, which is **stable, long life and no UV & IR emission.** The anodized aluminum frame is **stylish and fashionable with everlasting color.** This panel light is powered by **low voltage Adjustable Current Driver** which is **safety, energy saving and long life.** It is the ideal replacement for traditional grid lights and fluorescent tubes. Moreover, Light Master Panel light creates an industry leading conformity and consistency, which conventional light never achieved.*



A new generation of LED Panel Light offering industry leading 4 options of adjustable CCT Tuneable settings and 4 levels of adjustable Power options.

Each panel allows the user to change the lighting conditions according to their wishes.

BASEMENTS • ENTRYWAYS • RESIDENTIAL GARAGES • WORKSHOPS
STORAGE AREAS • CHURCHES • MEDICAL FACILITIES • CLASSROOMS • OFFICES • DROP CEILINGS

FEATURES

0-10V dimmable and CCT Tunable & 4 Types Power
 CCT Tunable from 3000-3500-4000-5000K
 Optional Power: 20-25-30-35W, 30-35-40-45W, 35-40-45-50W, 55-60-65-72W
 No wire connections needed
 UL/cUL with isolated external power supply
 LED Source: SMD2835, CRI>80, LM80 report
 High Quality LGP, imported from Taiwan
 5-year warranty
 Input Voltage: AC 120-277V/AC120-347V
 THD: ≤ 15%
 PF: >0.95 Non-flicker
 Power Efficiency: >90%
 Beam Angle: 120°
 Material: Aluminum+ High Quality LGP
 Working Temperature: -20°C ~+45°C
 Storage Temperature: -25°C ~+65°C
 IP Grade: IP40
 Working Life-span: 50,000H

EXAMPLE



SPECIAL FEATURES

CCT Tunable

Adjustable brightness and power

| Model | Watt | Size | Lumen | CCT(K) | Input Voltage |
|--------------------|--------------------------|-----------------------------------|---------|---------------------|---------------|
| LM-ADJ-24-28-DD-01 | 35W 40W 45W 50W | 47.76" x 23.74" x 0.40" 2*4 FT | 125lm/W | 3000K 3500K | AC 120-277V |
| LM-ADJ-22-28-DD-01 | 20W 25W 30W 35W | 23.74" x 23.74" x 0.35" 2*2 FT | 125lm/W | 4000K | |
| LM-ADJ-14-28-DD-01 | 20W 25W 30W 35W | 47.76" x 11.85" x 0.35" 1*4 FT | 125lm/W | 5000K | |



PS:DD = FUNCTIONS DM: Dimming DS: Dimming + Sensing DE: Dimming + Emergency
 SE: Sensing + Emergency RD: Wireless dimming