

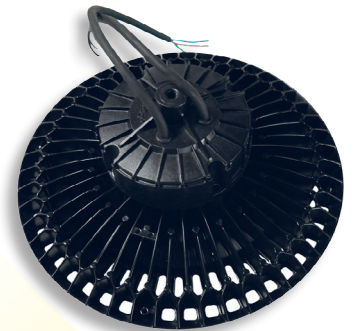
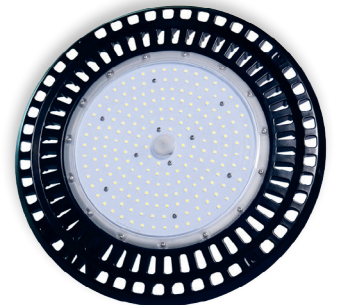
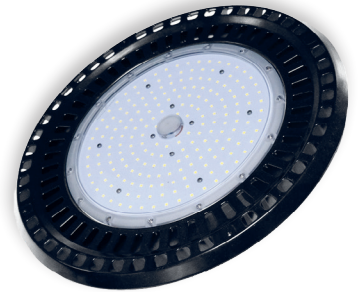
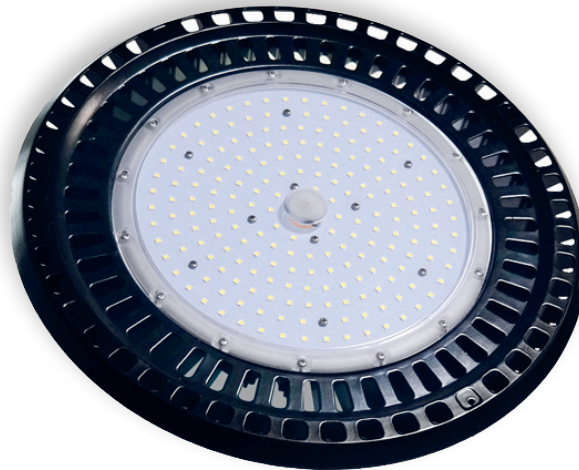


INTRODUCING

CLASSIC UFO HIGH BAY

Stylish and classic High Bay for a variety of Industrial, Factory, Warehouse and Commercial Requirements

This Classic UFO LED High Bay Light adopts a qualified super bright LED as its light source for superior light output. The special designed housing is stylish and fashionable with excellent heat management capabilities. This energy efficient, Uniform, High Lumen output is the total package at a very affordable price structure. The superior light source is stable, long life with no UV or IR emissions. You will find the Classic UFO High Bay rated for IP-65 and a 7 year warranty.



The Classic UFO High Bay is a direct replacement to most MH, HID or HPS suitable lighting systems. This UFO High Bay will greatly reduce your energy costs and comes in a variety of reflector and acrylic Lenses making it ideal for a wide range of applications.

BASEMENTS • ENTRYWAYS • RESIDENTIAL GARAGES • WORKSHOPS
STORAGE AREAS • CHURCHES • MEDICAL FACILITIES • CLASSROOMS • OFFICES • DROP CEILINGS



FEATURES

Ultra Modern and stylish innovative design

Unique Appearance and innovative heat sink design

An amazing 130 Lm / Watt

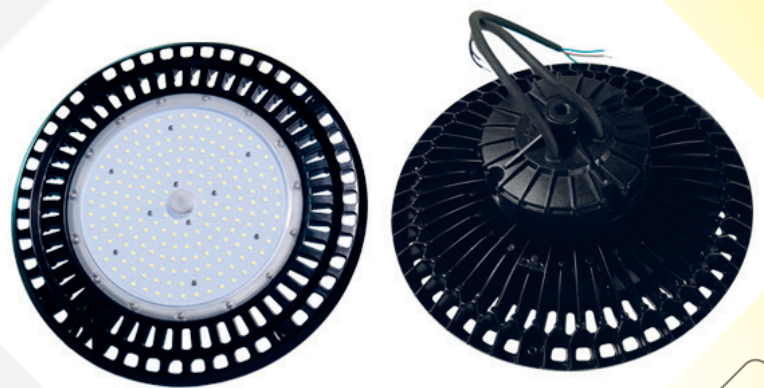
Lower operating Temperature makes it extremely versatile under a variety of operating conditions.

Durable and rugged design with life span over 60,000 hours

Light weight and Easy Installation

7 Years Guaranteed

EXAMPLE



SPECIFICATIONS

Non Flicker

Driver Operation

Power & Lumen Output:

- 100 W • 14000 Lm @ 5700 K
- 150 W • 22400 Lm @ 5700 K
- 200 W • 28100 Lm @ 5700 K
- 230 W • 32300 Lm @ 5700 K
- 260 W • 36400 Lm @ 5700 K

Dimensions:

- 100 W to 230 W • 15.28" x 6.78"
- 260 W • 6.85" x 7.88"

Color Temperature Availability

- Natural White • 4000 K
- Pure White • 5000 K
- Bright White • 5700 K

Housing

Black Aluminum

Beam Spread

120 degrees

Operating Temperature

-40 C to + 50 C (Amb)

Input Voltage

90 to 305 V/AC

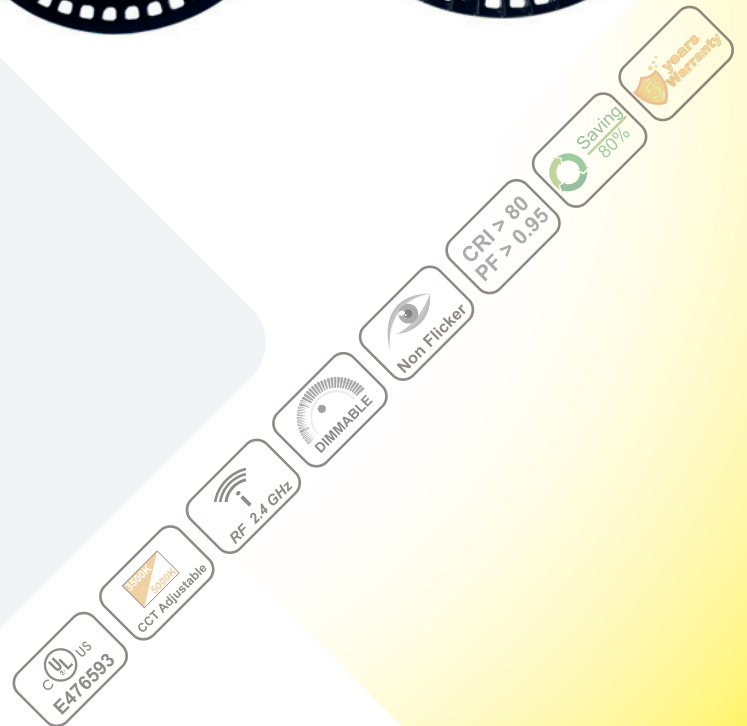
Net Weight

6.10 to 7.35 Kg

Rated for IP65 Conditions

Installation

Pendent & Wall Mounting available



Part Number	Power	CCT	Lumen Output	Beam	Dimensions
LM-UFO-100W-DW	100W	4000K / 5000K	14000		15.28 x 6.78
LM-UFO-150W-DW	150W	4000K / 5000K	22400	60 D	15.28 x 6.78
LM-UFO-200W-DW	200W	4000K / 5000K	28000	90 D	15.28 x 6.78
LM-UFO-230W-DW	230W	4000K / 5000K	32200	120 D	15.28 x 6.78
LM-UFO-260W-DW	260W	4000K / 5000K	36400		16.85 x 7.88